



YSP-1 DIGITAL SOUND PROJECTOR

for more product information,
applications and features please visit
www.yamaha.com/home



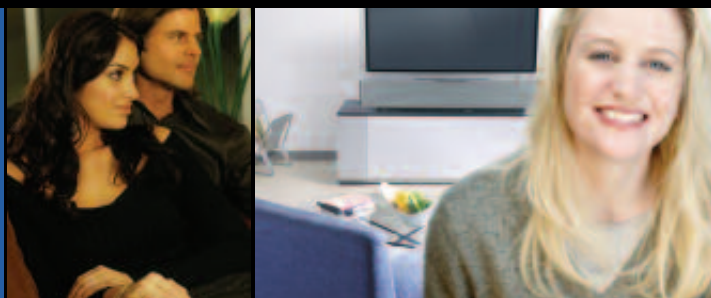
Yamaha Electronics Corporation, USA 6660 Orangethorpe Avenue Buena Park, CA90620 www.yamaha.com

Dolby, Pro Logic and Double D are trademarks of Dolby Laboratories Corporation.
DTS is a trademark of Digital Theater Systems, Inc.
Product designs and specifications are subject to change without notice.



Y S P - 1

multi-channel SURROUND SOUND
ENJOYMENT FROM A **single component...**



DIGITAL SOUND
PROJECTOR

simplify your home theater





utilize | *revolutionize your*

wallspace

The Yamaha Digital Sound Projector (YSP-1) is an exciting breakthrough in home theater technology. Now you can get optimum multi-channel sound directivity to enjoy the full benefits of home theater all from one easily installed component.

No more multiple speakers, no more clutter, no more hiding wires... just the pure excitement of bringing your movies and music to life.



The YSP-1 is designed to be an ideal, slim design match for your video display set.



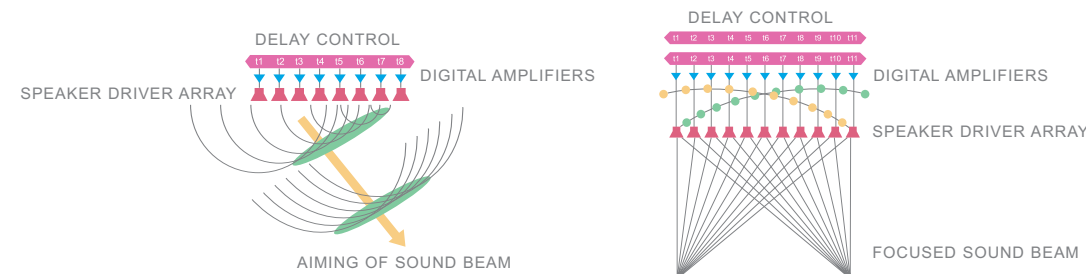
Although it is only one component, there are actually 42 speaker drivers inside that project precisely focused beams of sound aimed for optimum surround sound effect.

projecting reflecting sound *the source for multi-channel enjoyment*

The YSP-1 employs multiple small speakers, each with its own digital amplifier, and our unique projection technology to control the orientation of the sound. By focusing the sound into "beams" and controlling the speaker delay times, the listener perceives the sounds to be coming from additional speakers placed throughout the room, when in fact there is only the Yamaha Digital Sound Projector.

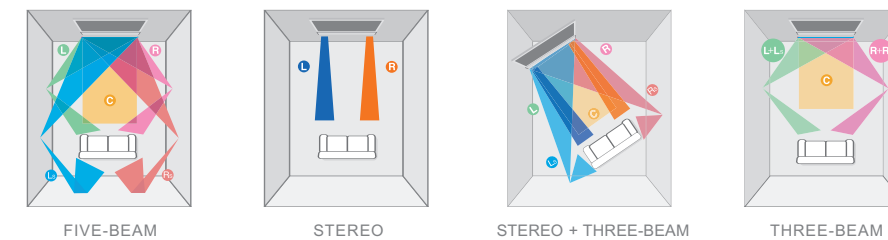
AN EASY BLEND

It's not just about how it sounds... it's also about style, and how well the YSP-1 complements a wall or stand-mounted plasma, LCD or rear-projection video display. With slim, contemporary design, the YSP-1 becomes an elegant statement of the latest in home theater technology. And, since it can be used as an on-wall system, you can take the YSP-1 with you if you move!



The time delay of each speaker driver is controlled by a Digital Sound Projection circuit, enabling the system to project "beams" of sound which are precisely aimed for optimum surround sound effect. The direct and reflected sound waves produce true multi-channel surround sound.

High separation two-channel sound can also be reproduced by superimposing multiple beams of sound as pictured above.



Multi-Channel Surround Sound... Plus!

Five-Beam: All five channels--L, R, C, Ls and Rs--are given separate orientations. Sound is beamed off the walls to create the effect of a surround system with rear speakers. **Stereo:** The left and right woofers, with the multiple beam speakers acting as tweeters, reproduce the effect of conventional stereo speakers.

Stereo + Three-Beam: The L and R channels are produced using stereo mode while C, Ls and Rs are produced using beaming. This mode is effective when the YSP-1 placed in a corner. **Three-Beam:** Three beams are produced: L+Ls, R+Rs and C. A surround sound effect is created by reflecting the sound off the walls.

EASY TO SET UP

Setting up the Yamaha digital sound projector is easier than conventional home theater systems because multiple speakers and wiring are eliminated. Placement is versatile, with the YSP-1 able to be positioned in the front center or either front corner of the room. It can also be wall or table mounted for flat panel TVs, or even placed next to, or on top of, your video display.

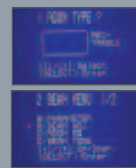


technically sophisticated highly **simplified** *bouncing off the wall ... redefined*

While there is a dazzling amount of advanced technology contained in the YSP-1, its main purpose is still to provide easy, non-intrusive multi-channel home theater enjoyment. The YSP-1 Digital Sound Projector, another revolutionary approach from Yamaha for bringing life-like movie and music entertainment into your home. Bouncing off the walls just took on a whole new meaning.



YSP-1 DIGITAL SOUND PROJECTOR



on screen display



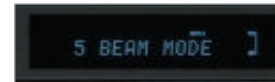
SPECIAL FEATURES

- Easy Set Up Setting: Room Type - Shape of the room Speaker Position - Where is the YSP placed Room Size - How big is the room
- Adjustable Surround Mode and Manual Setup
- Dolby Digital & DTS Surround Sound Compatibility Dolby Pro Logic II - (Movie, Music and Game) DTS Neo:6 (Cinema and Music)
- Three User Memory Positions
- Night Listening Mode
- Room Equalizer
- Parameter Settings
- Horizontal/Vertical Angle Adjustment
- Preset Remote Control

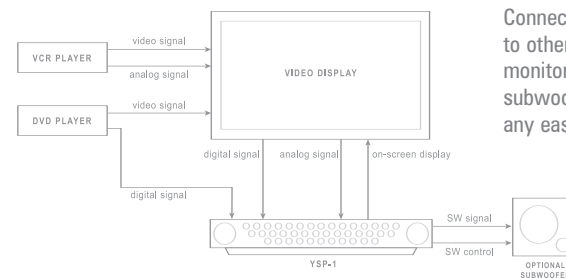
PRODUCT SPECIFICATIONS

Speakers Section	1-5/8" (4cm) x 40 drivers 4-3/8" (11cm) x 2 woofers
Digital Amplifier	120 W total power: 2 W x 40 + 20 W x 2
Dimensions (W x H x D)	40-9/16" x 7-3/4" x 4-5/8" 1,030 x 194 x 118 mm
Weight	28.7 lbs.; 13 kg

A subtle blue LCD keeps you informed of your current surround setting and volume level without interfering with your viewing enjoyment.



The YSP-1 rear panel offers 2 optical and 1 coaxial digital inputs, 2 analog inputs, subwoofer output, and RS-232C interface for custom applications.



Connecting the YSP-1 to other sources, video monitors and optional subwoofer couldn't be any easier.



SPM-K1 : Optional Wall Mounting Bracket

THESE WALLS CAN TALK

Clear movie dialog, well-placed sound effects and perfect background music... all for your personal enjoyment, courtesy of Yamaha and your own walls. Able to be used with DVD, satellite or cable TV broadcasts, the YSP-1 even offers built-in surround sound decoders for Dolby Digital, DTS Neo:6, Dolby Pro Logic II, plus an on-screen menu that provides easy access to a wide range of customizable features.



Yamaha's unique Digital Sound Projector garnered several prestigious awards from technology editors and publications at the 2005 International Consumer Electronics Show (CES), including Best of Show from G4 TechTV.

