

VPN Concentrator Router

RTX5000



Newly released in THAILAND, MALAYSIA and INDONESIA

VPN Concentrator to connect up to 3,000 locations

The RTX5000 is the ideal VPN concentrator to be installed in a center office or a data center for retail and service industry having many branches.

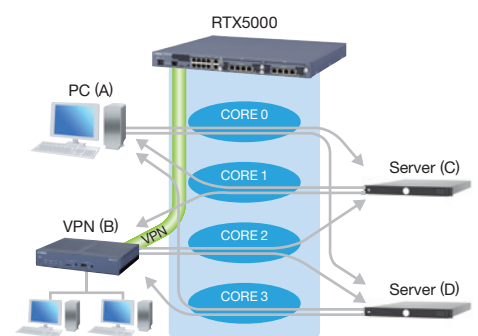
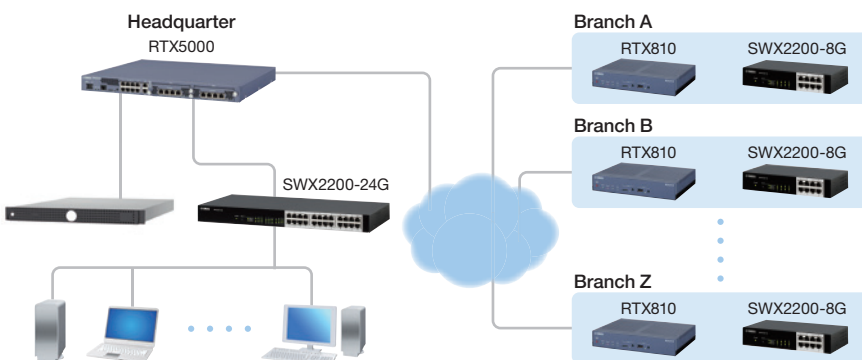
The RTX5000 can support many equipments in LAN side, which makes it suitable for a large scale network such as government agencies, hospitals, schools and hotels.

Advanced Architecture for Less Space and Less Energy

Only in a compact 19-inch 1U rack-mount case size, RTX5000 contains 2x 4-port L2 switching hubs supporting link aggregation which makes redundant configuration design easily. Also, the AC power supply uses Yamaha's proprietary design to save power consumption.

High performance Gigabit Ethernet Router

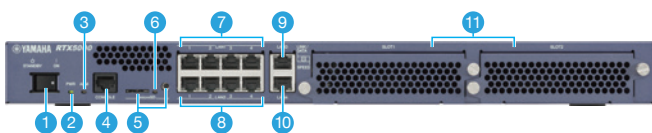
The RTX5000's multi-core CPU design delivers high performance Gigabit Ethernet (1000BASE-T) for 10 ports. Yamaha's proven router OS has been optimized for multi-core CPUs to enable high throughput of up to 4 Gbit/s and 2G bit/s for VPN.



Specification of RTX5000 and RTX810

		RTX5000 (VPN Concentrator Router)	RTX810 (VPN Router for Branch Offices)
WAN		4 Gigabit Ethernet ports (LAN1/2 are 4-port Gigabit Ethernet managed switch)	1 Gigabit Ethernet port
LAN			4-port Gigabit Ethernet managed switch
LAN switching function		Port separation, LAN segmentation(Port base VLAN), Port mirroring, Link aggregation	Port separation, LAN segmentation(Port base VLAN), Port mirroring
microSD slot		1(up to 32GB)	1(up to 32GB)
USB port		-	1(USB2.0 Type-A, Available with USB flash drive/USB 3G modem)
Console port		1(RJ-45, RS-232C)	1(D-sub 9 pin)
Flash ROM		128MB	16MB
RAM		1GB	128MB
Operating temperature		0-40 degree Celsius	0-50 degree Celsius
Operating humidity		15-80% RH	15-80% RH
Power supply input range		100-240VAC(50Hz/60Hz)	100-240VAC(50Hz/60Hz)
Maximum power consumption		38W	11W
Dimensions (excluding cables and connectors)		445(W)×44(H)×400(D)mm	220(W)×42.6(H)×160.5(D)mm
Weight (excluding accessories)		4.7kg	870g
Body material		Metal case, 2 fans	Plastic case, no fan
Throughput		Up to 4Gbps	Up to 1Gbps
IPsec throughput		Up to 2Gbps	Up to 200Mbps
IPv4 routing protocol		RIP, RIP2, OSPF, BGP4	RIP, RIP2, OSPF, BGP4
IPv6 routing protocol		RIPng, OSPFv3	RIPng
IPv6 multicast		MLD	MLD
WAN protocol		PPP, PPPoE (Up to 40 sessions)	PPPoE (Up to 5 sessions)
VPN	Concurrent session	Maximum total concurrent session:up to 3,000 (IPsec:up to 3,000, L2TP over IPsec:up to 3,000, L2TPv3:up to 49)	Maximum total concurrent session:up to 50 (IPsec:up to 50, L2TP over IPsec:up to 50)
	IKE version	IKEv1, IKEv2	IKEv1, IKEv2
	Encryption	AES-256/128, Triple-DES, DES	AES-256/128, Triple-DES, DES
	Hash	SHA-256, SHA-1, MD5	SHA-256, SHA1, MD5
Firewall		NAT/NAPT:Up to 65,534 sessions, SPI:Up to 65,534 sessions	NAT/NAPT:Up to 10,000 sessions, SPI:Up to 10,000 sessions
Security		URL filtering, DHCP device certification, Winny filtering(Winny Version2 compliant), Share filtering(Share ver.1.0 EX2 compliant), MAC address filtering	URL filtering, DHCP device certification, Winny filtering(Winny Version2 compliant), Share filtering(Share ver.1.0 EX2 compliant), MAC address filtering
Certification		RADIUS, PAP/CHAP, MS-CHAP/MS-CHAPv2	RADIUS, PAP/CHAP, MS-CHAP/MS-CHAPv2
Availability		VRRP	VRRP
Line backup		Wired-wired, L2 keepalive, ICMP keepalive, IPsec keepalive	Wired-wired, wired-mobile, L2 keepalive, ICMP keepalive, IPsec keepalive
Load balancing		Available	Available
QoS		Priority queuing, bandwidth control	Priority queuing, bandwidth control
SNMP		v1, v2c, v3	v1, v2c, v3
Web GUI		-	Available
Command line		SSH, TELNET, Serial console	SSH, TELNET, Serial console
Configuration file transfer		SFTP, TFTP, SCP	SFTP, TFTP, SCP
Firmware version up		SFTP, TFTP, SCP, external memory	HTTP, SFTP, TFTP, external memory, SCP
Logging		Syslog, internal:up to 20,000 lines(non-volatile), external memory	Syslog, internal:up to 3,000 lines(non-volatile), external memory
Lua script		Available	Available
Customized GUI		-	Available

Name of the individual parts



- 1 POWER Switch
- 2 PWR Lamp
- 3 ALM Lamp
- 4 CONSOLE Port
- 5 microSD Slot and Button
- 6 microSD Lamp
- 7 LAN-1 Port
- 8 LAN-2 Port
- 9 LAN-3 Port
- 10 LAN-4 Port
- 11 Expansion Slot

- 12 Ventilation Hole
- 13 Power Inlet

ASEAN Network Products Lineup

VPN Router for Branch Offices
RTX810



Smart L2 Switch
SWX2200-8G



Smart L2 Switch
SWX2200-24G



We offer Technical Training for partners.

Please contact our distributors (<http://www.yamaha.com/products/en/network/distributors/>)