



YAMAHA ELECTRONICS CORPORATION, USA

6660 Orangethorpe Avenue, Buena Park, CA 90620

April 15, 2008

Subject: RX-V1800 or HTR-6190 Firmware Update

Yamaha has found that in some instances when playing back some DTS-HD Master Audio materials on an RX-V1800 or HTR-6190, a pop-noise may be generated at any time during playback of Blu-ray disc contents. Yamaha is offering a firmware update to correct this issue as well as other minor improvements.

NOTE: This update is only applicable to units that have smaller serial numbers than Y219817WY.

If the serial number is Y219817WY or larger, it is not necessary for you to execute this firmware update.

This quick update was designed so that a user can complete the update themselves or have it completed by an Authorized Yamaha Service Center. Included in this document are the update instructions, as well as the link to download the firmware update.

[Click here for firmware update.](#)

If you are not able to perform the update, please make arrangements to deliver the unit to an Authorized Yamaha Service Center and they will perform the update.

[Click here to locate a local service center.](#)

Instructions for Firmware Update: **Note: Executing this update will RESET AV Receiver to factory default settings.**

Step 1. Create the Firmware Update CD (Audio CD) from the downloaded content.

- 2.a) To create the firmware update CD from the downloaded ZIP file, please uncompress the ZIP file and create an Audio CD using the included WAV file.
- 2.b) If you need instructions on creating this firmware update CD, see your Personal Computer ("PC") CD burning software instructions on how to burn a WAV file as an Audio CD.

Step 2. Connect a CD Player or DVD Player * using a digital connection (Coax or Optical) into any input (including front panel digital input) of the RX-V1800/HTR-6190. (*Note: In some instances a DVD Player will not work for this update procedure, so connecting a CD Player is preferred)

Fig1.0 shows the rear panel of the AV Receiver. See owner's manual for additional information on how to connect a CD player or DVD player via a Coaxial or Optical digital cable.

*Some DVD Players use digital filters, which affects the output signal of the devices. The firmware update will not work with DVD Players that use these digital filters. CD Players usually do not use these filters so using a CD Player is preferred.

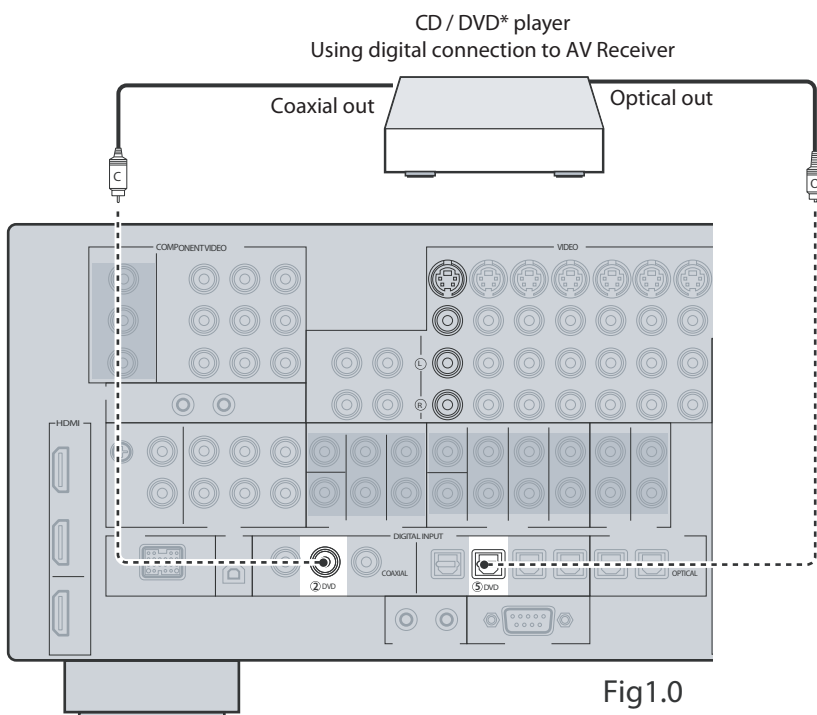
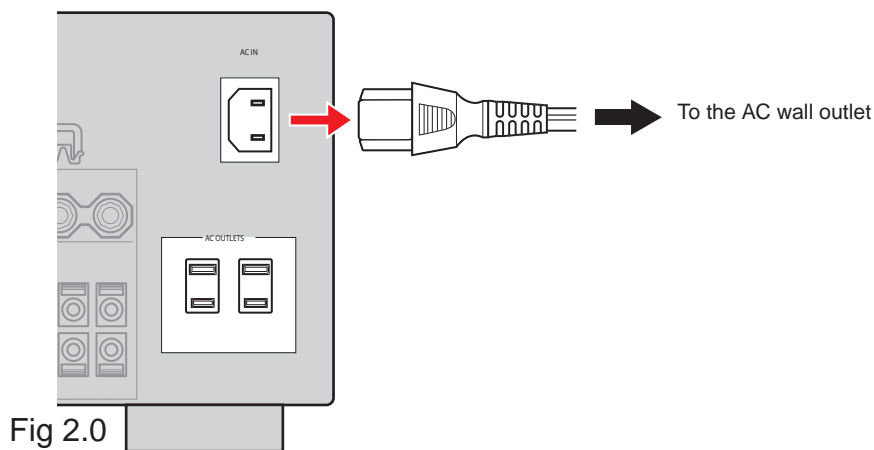


Fig1.0

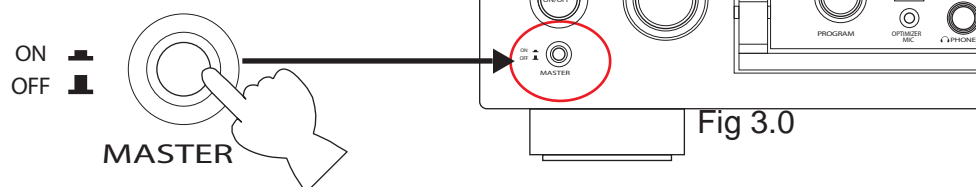
Step 3. Insert the Firmware Update CD (Audio CD) into the CD/DVD Player and close the tray. If the disc begins to play, press the STOP button on the CD/DVD Player.

- 3a) If a DVD Player is being used to perform this update, make sure that the DVD Player is set to PCM Digital Bitstream. See the DVD Player Owner's Manual for instructions on how to configure the PCM Digital Bitstream. Once update is complete, restore DVD Player to its original settings.

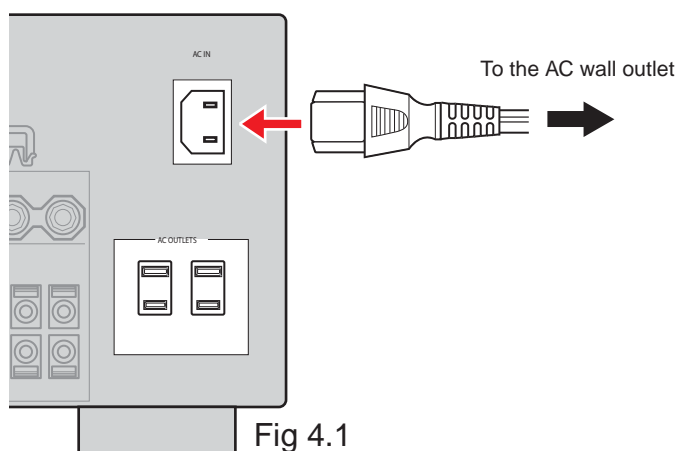
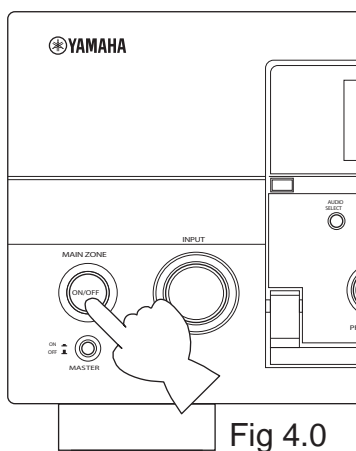
Step 4. Unplug the AC power cable from the back of the Yamaha receiver, as shown in FIG 2.0.



Step 5. On the front panel of the Yamaha receiver, push the MASTER button to the "ON" position, as shown in FIG 3.0. You can find operational details in the owner's manual.



Step 6. Press and hold the MAIN ZONE ON/OFF button and keep it pressed, as shown in FIG 4.0 while you plug the AC power cord back into the Yamaha receiver, as shown in FIG 4.1. Once the front panel displays "CDDA UPGRADER" you can let go of the MAIN ZONE ON/OFF button.



Step 7. Press the PLAY button on the digitally connected CD/DVD Player to start the firmware update. Once the firmware update starts, it will complete automatically in approximately 6 minutes.

- 7a) During this time do not press any buttons on the device. DO NOT switch off or interrupt the AV receiver during the firmware update process!
- 7b) If an unintended failure occurs, you may start the update process again from the beginning.

Step 8. When the firmware update is complete, the AV Receiver will show "UPDATE SUCCESS" on the receiver display screen. At this time, turn the Yamaha AV receiver OFF by pressing the MASTER button.

Step 9. Congratulations you have completed the firmware update. The AV receiver is ready for normal use.

If you experience ongoing issues with your AV receiver, please contact an Authorized Yamaha Service Center or Yamaha Customer Support at (800) 292-2982 and they can assist you.