

# MUSIC IN EDUCATION™

*Bring Music in Education to your school.*

*Technology Assisted Music Program*

Join the family of over 2,000 schools and 1 million students weekly who are advancing music education beyond all expectation.

This complete and cohesive program provides all hardware, software, wiring, instructional materials and support to fully integrate this amazing technology into your music classroom.

A comprehensive teacher training program and complete tech support are included with

the purchase or lease of Music In Education.

Introducing your students to Music In Education has never been easier. Yamaha offers a convenient leasing package, making Music In Education affordable for any school.

For additional information, call us at 800-253-8490 or visit our web site, [www.musicineducation.com](http://www.musicineducation.com).

- Better music departments!
- Parental interest and support!
- Pure student enthusiasm!

*Bring Music In Education to your students.*

## MUSIC IN EDUCATION™

*Technology Assisted Music Program*



Yamaha Corporation of America  
Band & Orchestral Division

P.O. Box 899, Grand Rapids, MI 49518-0899

Phone: 800-253-8490 • [www.musicineducation.com](http://www.musicineducation.com)

To identify your local Music In Education representative visit our website.



ROBERT STEPHENS  
Professor of Music Education  
University of Connecticut

"Music In Education is a program that recognizes the need to move beyond computer literacy and simple technology training; it fully integrates technology, research and curricular diversity into the teaching and learning process of the music classroom. Once you have seen Music In Education there can be no doubt—it IS the future, and the future is NOW"



*Forever changing the face of music education.*





## *A better way.*

Kids love music. They're naturally drawn to rhythms, melodies, lyrics and music's magical, mood-lifting qualities. But they don't always love the work music has historically taken to learn.

Music In Education initiates a positive cycle of continued success, confidence, enthusiasm and effort. Like any other acquired skill, learning comes easy when learning is fun.

Music in Education brings music to life.



## *Teaching music in the key of "geee!"*

### *The power of innovation.*

Music In Education uses advanced technology to bring one-on-one teaching to any music classroom. Fifteen keyboards with 30 students and one instructor unit are connected to a powerful computer software program.

No longer chained to playing accompaniments, the teacher can control the flow of lessons from a remote control unit.

### *Building a better music program.*

Lesson preparation is reduced to minutes. Students don't get lost in a sea of competing sound, nor do they wait their turn to use an instrument. Quicker learners gain proficiency at their own rate. Music classes become times of discovery, creativity and remarkable conceptual learning.

### *Everyone benefits.*

Music In Education means happier students, better music programs, quicker mastery, improved scholastic results, higher attendance rates and thoroughly amazed parents. It lays the foundation for a lifetime of creative expression. Kids learn music conceptually, through their own experiences.

### *Proven success.*

Over 6 million students in 2000 schools have found success through Music In Education.

This is a complete, proven system that enjoys accolades from teachers, administrators, parents and students nationwide.



BERT OWEN  
Music Supervisor  
Horry County Schools  
South Carolina

*"With Music In Education we could implement a technology assisted music program without requiring our teachers to become experts in technology first. Even better, hardware, software, instructional materials, listening, testing, teacher training, it's all provided by Yamaha in one of the most comprehensive programs I've seen."*



TINA GRAFF  
Elementary Music Teacher  
New Berlin Schools, WI

*"At first, I was concerned that I would be teaching technology. What I've found is I'm teaching music better than I ever have. The program is so transparent and easy to use, I can really focus on the teaching. I love it!"*



***Serious learning, Serious fun!***

## ***Ready, set, teach!***

When installed on your Mac or PC, powerful new MIE software lets the teacher direct classroom traffic for maximum flexibility.

Full function record-keeping, and one-touch sound access keep lessons on track and productive.

Complete teacher training and support are provided.

Automated class summaries. Progress at a glance.

In 80 modules, over 400 lessons

Modify orchestration, change tempo and key.

All keyboards are fully controllable by mouse or remote.

Easy access lesson outlines

Easy to see icons, visible from a distance



Web browser type format.

Point & Click record keeping.

A quiz for every module. Students love them!

## ***Yamaha MIE-2XG Keyboard.***

Fifteen student keyboards plus one for the teacher are provided. Each is a full 5-octave keyboard with 61 full-sized keys and loaded with advanced features, modes and functions.

All keyboards are controllable from both the keyboard itself and the central computer.

A one-of-a-kind "split" mode allows two students to play at each keyboard independently, or together in a creative collaboration.

## ***Push-button control from anywhere in the room!***

Teachers enjoy push button control and can move lessons along from anywhere in the class. Your overhead projector displays specially prepared and provided transparencies.

Music CD selections are easily played and controlled without having to dash to the computer.

### **FOUR OPERATING MODES:**

**Normal** mode makes keyboard a full-function, one person unit.

**Split** mode divides the keyboard into two instruments, each capable of complete operational independence. Students will not hear each other with headphones on.

**Ensemble** mode maintains the split, but partners can hear each other for collaborative learning efforts.

The **accompaniment** mode allows students to create accompaniments with one finger in the single mode. Advanced students can use their keyboard skills using the fingered mode to create more complex accompaniments.

Revolutionary three-way speaker system provides remarkable sound quality.

New controls give students even more options. Touch sensitivity can be activated on the front panel and through the software.

The new expanded sequencer including song selections (intro, ending, etc.) provides students ample opportunity for creativity.

All-new styles provide students with a wide variety of styles representing different cultures and time periods.

Teachers also have access the the entire XG library of styles. More styles than you can imagine!

All-new sounds based on XG, the state-of-the-art sound architecture developed by Yamaha with over 400 voices available.

Newly designed headphone jacks provide extra reliability and great sound to students.



LAUREN ALTIERE  
Elementary Music Teacher  
Wilson School District  
Phoenix, AZ

*"I wanted to keep teaching my Orff and Kodaly concepts when I got MIE. The integration process was seamless. My students love the class, love the quizzes and love creating. I have the best of both worlds!"*



## *All the tools you need...Allegro!*

### *Time-tested concepts, flexible curriculum.*

Because every classroom is different, flexibility is key. Lessons, plans, worksheets, overhead transparencies, song sheets and testing materials are included as hard-copy documents.

MIE curriculum is built on integrative and sequential concept-specific modules. New songs, activities and skills reinforce previously learned concepts. Students sing, play, discuss and listen to examples, then apply them to creative activities. Hundreds of compositions can be quickly accessed through your computer.

Each lesson develops conceptual knowledge, music reading skills and music-making skills.

Charts, worksheets, warm-ups and quizzes for every module, including overhead transparencies.

174 Specially arranged and sequenced songs and printed music.

80 sequenced-module lesson plans with over 400 lessons. Early learning versions are included!

Indexed, integrated and customizable CD listening examples.

### *Your personal Accompanist.*

All accompaniments are preprogrammed, but customizable. Teachers can modify selections—customize arrangements, change parts, instrument voices, transposition or tempo.

### *Like having an extra assistant.*

Attendance is point & click. Student activities and quizzes can be monitored. Information is automatically recorded, saved and can be called up for later review. Teachers can quickly assess both group and individual performance, making it easy to identify special needs.

### *Results!*

Students learn music conceptually through hands-on experience. Everyone enjoys themselves. The learning process makes great strides.

## *Documented Performance. Confirmed Results.*

Music In Education students exhibit consistent musical achievement growth on standardized tests.

Students show positive attitudes, motivation and creative desire within the music classroom and beyond. Teachers report significant improvement in reading and math.

Students take on greater responsibility, show improved on-task behavior and a greater willingness to take on complex assignments. Attendance rises, especially in at-risk students.

The MIE classroom *becomes* an MIE school.



KATHY PUNWAR  
Middle School Music Teacher  
Madison Public Schools, WI

*"The cooperative learning that goes on with my middle school students is incredible. They are more focused, show an intense desire to create and apply the concepts we learn in the class. Outside of the music room, subject teachers tell me they have seen improved behavior, more concentration and a higher level of involvement since we implemented MIE."*

# MUSIC IN EDUCATION™

## Technology Assisted Music Program

### Tech that teaches.

Start with any classroom computer system, PC or Mac™, and the stage is set for great things. Music In Education brings the amazing capabilities of advanced technology to the creative music classroom.

Since kids are hard on everything they touch, keyboards are tough, durable and easy to understand. Software has been extensively tested. A complete teacher training program is provided, as is a comprehensive tech-support network.

Integration with existing classrooms is simple and complete. No need for pre-wiring or expensive retro-fits. This system forms a classroom LAN for music instruction. And at roughly half the cost of a typical computer lab, Music In Education is within reach of almost any school.

#### FOUR OPERATING MODES:

**Normal** mode makes keyboard a full-function, one person unit.

**Split** mode divides the keyboard into two instruments, each capable of complete operational independence. Students will not hear each other with headphones on.

**Ensemble** mode maintains the split, but partners can hear each other for collaborative learning efforts.

The **accompaniment** mode allows students to create accompaniments with one finger in the single mode. Advanced students can use their keyboard skills using the fingered mode to create more complex accompaniments.

New controls give students even more options. Touch sensitivity can be activated on the front panel and through the software. The new expanded sequencer including song selections (intro, ending, etc.) provides students ample opportunity for creativity.

All-new sounds based on XG, the state-of-the-art sound architecture developed by Yamaha with over 400 voices available.

Revolutionary three-way speaker system provides remarkable sound quality.

Newly designed headphone jacks provide extra reliability and great sound to students.

All-new styles provide students with a wide variety of styles representing different cultures and time periods. Teachers also have access to the entire XG library of styles. More styles than you can imagine!



## Tech support, anytime.

For all the innovative and unique features, problems are few and far between. But in the event that something defies normal remedies, Music In Education's support network will get you back up and running quickly.

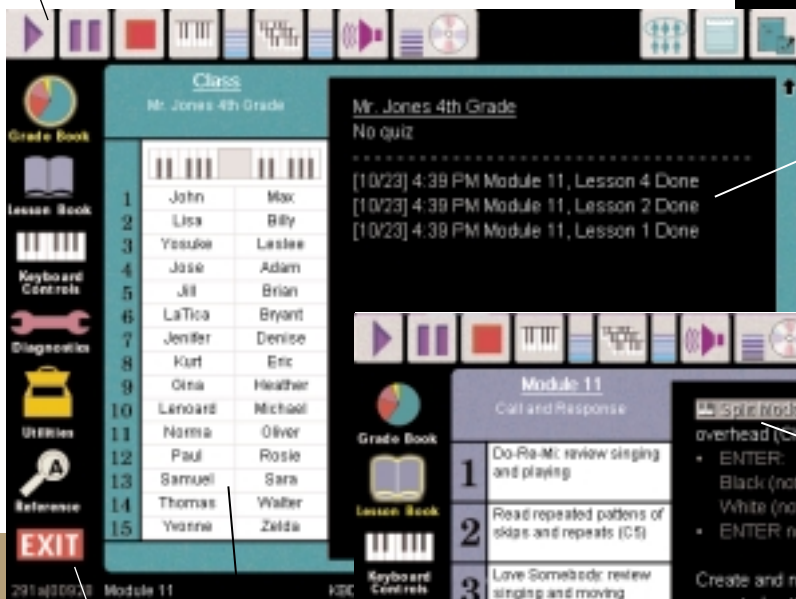
## Simple system requirements

Music In Education does not require your purchase of the latest, fastest and largest computers. Compatible with either Mac or IBM platforms, Music In Education software requires only minimal processor capabilities. Add an overhead projector and Music In Education is ready to roll!

**PC** 200 mhz or faster, Windows 98 or later, 64 MB RAM recommended, 10 MB available hard drive memory, CD-ROM, USB port and 15" monitor (or larger) suggested.

**Mac** iMac, G3 or G4 running OSX, 128 MB RAM, 20 MB hard drive space.

Easy to see icons,  
visible from a distance



Automated class summaries.  
Progress at a glance.

In 80 modules,  
over 400 lessons

Modify  
orchestration,  
change tempo  
and key.

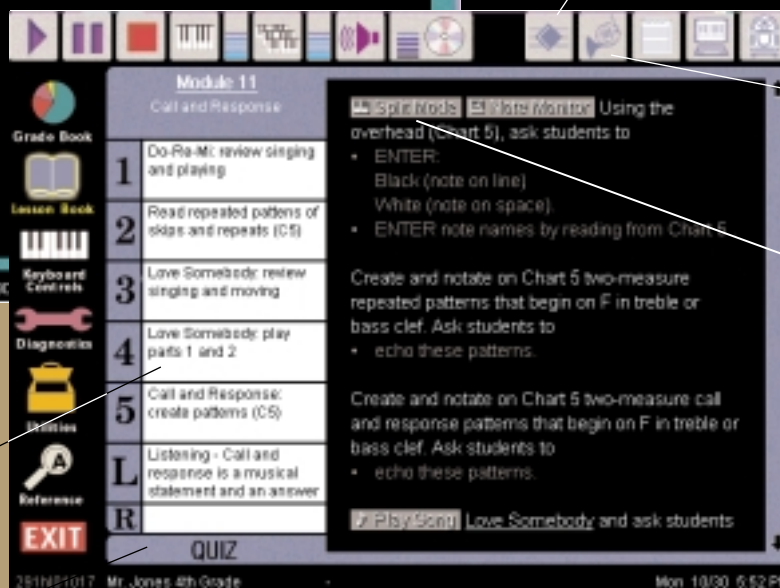
All keyboards  
are fully  
controllable by  
mouse or remote.

Web browser  
type format.

Point & Click  
record keeping.

Easy access  
lesson outlines

A quiz for every  
module. Students  
love them!



## MUSIC IN EDUCATION™

Technology Assisted Music Program



Yamaha Corporation of America  
Band & Orchestral Division  
P.O. Box 899, Grand Rapids, MI 49518-0899

Phone: 800-253-8490

[www.musicineducation.com](http://www.musicineducation.com)

To identify your local Music In Education  
representative visit our website.



# *MUSIC IN EDUCATION™*

## *Technology Assisted Music Program*



### *Better music departments mean better schools.*

When students get fired up about music, they make real strides. Enthusiasm skyrockets. On-task dedication rises. Proficiency leaps forward.

Kids go home excited to share their progress. Parents positively glow!

Non-music studies show upward movement. School bands improve. Performance skills take off.

When music becomes part of students' lives, the whole school benefits.



## *The research. The results.*

Research confirms the benefits of the Music In Education program.

Students show consistent growth in musical achievement on standardized tests. Attitudes and motivation remain positive and kids show increased desire to create their own original music.

## *Beyond the music classroom.*

Teachers report significant gains by MIE students in reading and math. They report these students are more eager to work cooperatively with others, and show greater responsibility and better behavior.

Students exhibit a greater willingness to tackle complex assignments, demonstrate increased attention spans and show better self-concept. Attendance rises. School image gets a major polish. For a complete research report, call 1-800-253-8190.

## *Attainable technology.*

Music In Education represents an outstanding educational value within the reach of nearly every school. Special purchase and leasing programs make financing simple, quick and affordable.

This system was not created for strictly affluent school districts. It was designed for ordinary budgets and extraordinary results. The complete MIE program can be put into place for about half the cost of a standard computer lab.

Music In Education builds strong schools.

# MUSIC IN EDUCATION

Technology Assisted Music Program



Yamaha Corporation of America  
Band & Orchestral Division  
P.O. Box 899, Grand Rapids, MI 49518-0899

Phone: 800-253-8490

[www.musicineducation.com](http://www.musicineducation.com)

To identify your local Music In Education representative visit our website.

### FOUR OPERATING MODES:

**Normal** mode makes keyboard a full-function, one person unit.

**Split** mode divides the keyboard into two instruments, each capable of complete operational independence. Students will not hear each other with headphones on.

**Ensemble** mode maintains the split, but partners can hear each other for collaborative learning efforts.

The **accompaniment** mode allows students to create accompaniments with one finger in the single mode. Advanced students can use their keyboard skills using the fingered mode to create more complex accompaniments.

Revolutionary three-way speaker system provides remarkable sound quality.

New controls give students even more options. Touch sensitivity can be activated on the front panel and through the software.

The new expanded sequencer including song selections (intro, ending, etc.) provides students ample opportunity for creativity.

Newly designed headphone jacks provide extra reliability and great sound to students.



All-new sounds based on XG, the state-of-the-art sound architecture developed by Yamaha with over 400 voices available.

All-new styles provide students with a wide variety of styles representing different cultures and time periods. Teachers also have access to the entire XG library of styles. More styles than you can imagine!



# MUSIC IN EDUCATION™

## *Technology Assisted Music Program*

### *Imagine a Music In Education classroom.*

Students play their own instruments. The curriculum allows students to gain proficiency at their own pace.

Lesson plans, record keeping and student progress evaluations are all handled by technology, leaving teachers free to actually teach music.

Students are no longer tied to textbooks. Teachers are no longer chained to the front of the room, playing accompaniments.

Move freely among your students --accessing accompaniments & listening examples and controlling student keyboards by remote control.

Music In Education technology represents some of the most powerful and innovative management tools available today for any public or private school music program.

It's real. It's here. Music In Education.

### *Flexibility & Control.*

The unique non-graded, sequential curriculum lets each class advance at its own pace. Students move on to new concepts only when the teacher determines they are ready. Run your lessons from anywhere in the classroom by remote.

Music In Education software finds selections and automatically presets keyboards, CD listening and remote control settings.

Activities are automatically entered into progress reports.

All curriculum songs are pre-programmed, but teachers are still free to modify selections--customize arrangements, change parts, instrument voices, transposition or tempo.



## Amazing Keyboards!

As the central platform for all class activities and as a creative springboard, the specially designed MIE-2XG keyboard offers a dazzling array of teacher-tested features. Students get hands-on experience working at their own keyboard. They can work solo, in pairs or with the entire class.

Choose over 400 mult-timbral voices and thousands of rhythms. All classroom keyboards are instantly mutable at the touch of a button. There simply is no other keyboard made today with more educational features.

## Love it from Day One!

Music In Education brings enthusiasm, fun and real learning to the music classroom. Teachers love it because they see real joy, interest and cooperation in their students.

Kids love it because they learn quickly, experience lots of success and get to play an instrument everytime they come to class!

What's not to love?

### FOUR OPERATING MODES:

**Normal** mode makes keyboard a full-function, one person unit.

**Split** mode divides the keyboard into two instruments, each capable of complete operational independence. Students will not hear each other with headphones on.

**Ensemble** mode maintains the split, but partners can hear each other for collaborative learning efforts.

The **accompaniment** mode allows students to create accompaniments with one finger in the single mode. Advanced students can use their keyboard skills using the fingered mode to create more complex accompaniments.

## MUSIC IN EDUCATION

Technology Assisted Music Program



Yamaha Corporation of America  
Band & Orchestral Division  
P.O. Box 899, Grand Rapids, MI 49518-0899

Phone: 800-253-8490

[www.musicineducation.com](http://www.musicineducation.com)

To identify your local Music In Education representative visit our website.

New controls give students even more options. Touch sensitivity can be activated on the front panel and through the software. The new expanded sequencer including song selections (intro, ending, etc.) provides students ample opportunity for creativity.

All-new sounds based on XG, the state-of-the-art sound architecture developed by Yamaha with over 400 voices available.

Revolutionary three-way speaker system provides remarkable sound quality.

Newly designed headphone jacks provide extra reliability and great sound to students.

All-new styles provide students with a wide variety of styles representing different cultures and time periods.

Teachers also have access to the entire XG library of styles. More styles than you can imagine!

